



# **BUILDING THE FUTURE TOGETHER**

**THREE YEAR EDUCATION PLANNING  
MARCH 14, 2012**

**COLLABORATE  
CREATELEARN**



Where we're coming from ...

# Strong Foundation to Build on in the Future

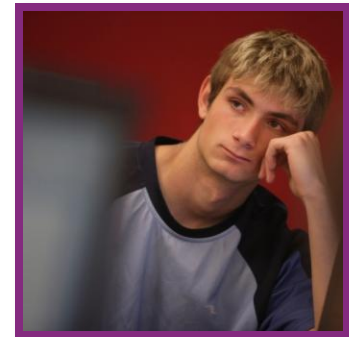


**BUILDING THE FUTURE TOGETHER**

# Parkland School Division



- Learning organization
- Enduring success for all
- Core values
- Work first and foremost about children
- Safe and respectful environments



BUILDING THE FUTURE TOGETHER

Where are we today?

# PSD Today

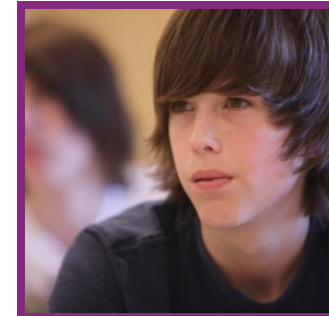




# 2011-2012 and on!



- Building Community
- Relationships
- Engagement
- Shared Leadership
- Communication
- Student Achievement
- Future Planning



BUILDING THE FUTURE TOGETHER

**Collaboration is an integral part of who we are.**

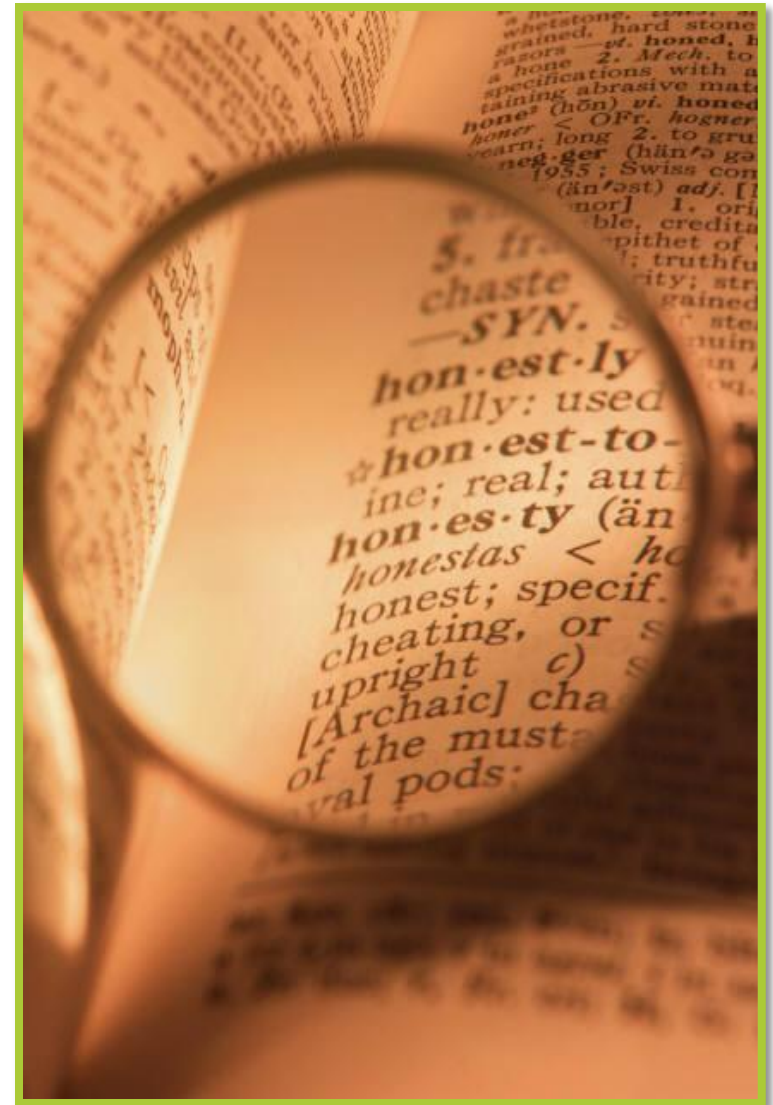


## **Collaborative Culture**

**Together we are stronger**

What we value and strive for ...

# Transparency



# Engagement in Education

INNOVATION  
SUCCESS  
EVALUATION  
DEVELOPMENT  
GROWTH  
SOLUTION  
PROGRESS  
MARKETING







- COLLABORATE
- CREATE
- LEARN

Managing our priorities and many initiatives.

**Sometimes we  
need to go slow  
to go fast!**



Looking to the future ...

# PSD Tomorrow





# Future Directions



# As we move forward:



- Model the way
- Challenge the process
- Enable others
- Encourage the heart





# Inspire a Shared Vision



- Envision the future by imagining exciting and enabling possibilities
- Enlist others in a common vision by appealing to shared aspirations



# Envision



World where we are:

- Setting students up for success
- Keeping students engaged
- Making learning relevant
- Creating caring, respectful environments
- Developing ethical citizens
- Developing global thinkers
- Creative
- Life-long learners
- Inspired



**Dream...**  
**What does**  
**PSD**  
**look like**  
**tomorrow?**





**COLLABORATE**  
**CREATE LEARN**